



**Water Monitoring Result at C7 - Windsor House
Mid-Flood Tide**

Date	Time	Weather Condition	Sampling Depth		Water Temperature			pH			Salinity			DO Saturation		DO		Turbidity		Suspended Solids				
			m		°C		-		ppt		%		mg/L		NTU		mg/L							
					Value	Average	Value	Average	Value	Average	Value	Average	Value	Average	Value	Average	Value	Average						
28/8/19	17:45	Fine	Middle	1.5	28.80	28.80	28.80	7.32	7.32	7.33	27.36	27.36	27.36	67.1	67.2	67.4	4.45	4.45	4.48	2.73	2.74	2.75	8	8.50
	17:47		Middle	1.5	28.80	28.80		7.33	7.33		27.36	27.36		67.5	67.9		4.47	4.56		2.75	2.76		9	
30/8/19	17:52	Cloudy	Middle	1.5	27.50	27.50	27.50	7.60	7.60	7.60	29.31	29.31	29.31	85.0	84.7	84.3	5.70	5.68	5.66	1.80	1.67	1.66	6	5.50
	17:53		Middle	1.5	27.50	27.50		7.60	7.60		29.31	29.31		82.8	84.8		5.56	5.69		1.44	1.73		5	
4/9/19	10:06	Fine	Middle	1.5	25.40	25.40	25.50	8.05	8.05	8.05	29.06	29.06	29.06	98.2	98.1	97.8	7.12	7.11	7.08	2.01	2.01	2.01	14	13.00
	10:08		Middle	1.5	25.60	25.60		8.05	8.05		29.06	29.06		97.7	97.3		7.07	7.02		2.01	2.01		12	
7/9/19	15:06	Fine	Middle	1.5	27.40	27.40	27.50	7.91	7.91	7.91	28.94	28.94	28.94	77.6	77.7	77.9	5.06	5.07	5.09	2.11	2.11	2.11	3	2.50
	15:08		Middle	1.5	27.60	27.60		7.91	7.91		28.94	28.94		77.8	78.3		5.08	5.13		2.11	2.11		2	
9/9/19	16:50	Fine	Middle	1.5	27.40	27.40	27.45	7.78	7.78	7.78	28.68	28.68	28.68	77.7	78.0	78.0	5.60	5.63	5.63	3.41	3.41	3.41	7	6.50
	16:50		Middle	1.5	27.50	27.50		7.78	7.78		28.68	28.68		78.2	78.2		5.65	5.65		3.41	3.41		6	
11/9/19	18:06	Fine	Middle	1.5	28.10	28.10	28.20	7.72	7.72	7.72	30.95	30.95	30.95	81.2	81.7	82.0	5.82	5.87	5.90	2.50	2.50	2.50	7	6.50
	18:08		Middle	1.5	28.30	28.30		7.72	7.72		30.95	30.95		82.2	82.8		5.92	5.98		2.50	2.50		6	
13/9/19	3:30	Fine	Middle	1.5	28.60	28.60	28.60	7.81	7.81	7.81	29.57	29.57	29.57	90.7	91.7	90.4	5.96	6.02	5.94	1.85	1.90	1.86	4	4.50
	3:31		Middle	1.5	28.60	28.60		7.81	7.81		29.57	29.57		89.1	90.0		5.86	5.91		1.87	1.83		5	
16/9/19	4:30	Cloudy	Middle	1.5	28.00	28.00	28.00	7.67	7.67	7.67	28.26	28.26	28.26	82.6	81.0	81.6	5.63	5.42	5.49	2.71	2.66	2.81	7	6.50
	4:31		Middle	1.5	28.00	28.00		7.67	7.67		28.26	28.26		81.1	81.8		5.43	5.48		2.97	2.90		6	
18/9/19	8:46	Fine	Middle	1.5	27.90	27.90	27.95	8.24	8.24	8.24	30.91	30.91	30.91	84.6	84.9	85.1	6.16	6.19	6.21	5.62	5.62	5.62	3	3.50
	8:48		Middle	1.5	28.00	28.00		8.24	8.24		30.91	30.91		85.0	85.8		6.20	6.28		5.62	5.62		4	
20/9/19	10:35	Fine	Middle	1.5	25.10	25.10	25.20	8.48	8.48	8.48	29.74	29.74	29.74	77.0	77.2	77.7	5.53	5.55	5.60	2.51	2.51	2.51	8	7.50
	10:37		Middle	1.5	25.30	25.30		8.48	8.48		29.74	29.74		77.9	78.5		5.62	5.68		2.51	2.51		7	
23/9/19	14:12	Fine	Middle	1.5	27.20	27.20	27.25	7.57	7.57	7.57	28.97	28.97	28.97	92.7	93.1	93.2	6.80	6.84	6.85	3.40	3.40	3.40	6	6.00
	14:14		Middle	1.5	27.30	27.30		7.57	7.57		28.97	28.97		93.1	94.0		6.84	6.93		3.40	3.40		6	
25/9/19	15:45	Fine	Middle	1.5	30.80	30.80	30.80	7.67	7.67	7.67	31.66	31.66	31.66	83.8	83.8	84.1	5.28	5.28	5.29	5.81	5.79	5.82	10	10.50
	15:47		Middle	1.5	30.80	30.80		7.67	7.67		31.66	31.66		84.6	84.2		5.31	5.28		5.86	5.82		11	

Remarks:
Single underline denotes exceedance over Action Level.
Double underline denotes exceedance over Limit Level.



**Water Monitoring Result at C1 - HKCEC Extension
Mid-Flood Tide**

Date	Time	Weather Condition	Sampling Depth	Water Temperature		pH		Salinity		DO Saturation		DO		Turbidity		Suspended Solids								
				°C		-		ppt		%		mg/L		NTU		mg/L								
				Value	Average	Value	Average	Value	Average	Value	Average	Value	Average	Value	Average	Value	Average							
28/8/19	15:55	Fine	Middle	3.0	29.80	29.80	29.85	7.45	7.45	7.47	28.15	28.15	28.16	93.2	93.0	92.1	6.03	6.02	5.96	8.28	8.36	8.28	8	7.50
	15:57		Middle	3.0	29.90	29.90	29.85	7.49	7.49	7.47	28.16	28.16	28.16	92.0	90.2	92.1	5.92	5.86	5.96	8.17	8.30	8.28	7	
30/8/19	18:40	Cloudy	Middle	2.5	27.00	27.00	27.00	7.72	7.72	7.72	29.79	29.79	29.79	90.0	91.3	90.9	6.07	6.15	6.13	8.18	8.06	8.04	7	7.50
	18:41		Middle	2.5	27.00	27.00	27.00	7.72	7.72	7.72	29.79	29.79	29.79	91.5	90.6	90.9	6.17	6.11	6.13	7.98	7.93	8.04	8	
4/9/19	9:45	Fine	Middle	3.0	25.20	25.20	25.20	8.12	8.12	8.12	29.74	29.74	29.74	84.6	84.9	85.2	5.69	5.72	5.75	2.86	2.86	2.86	18	<u>18.50</u>
	9:47		Middle	3.0	25.20	25.20	25.20	8.12	8.12	8.12	29.74	29.74	29.74	85.3	85.8	85.2	5.76	5.81	5.75	2.86	2.86	2.86	19	
7/9/19	14:40	Fine	Middle	3.0	27.10	27.10	27.20	8.16	8.16	8.16	29.61	29.61	29.61	81.2	81.4	81.5	5.27	5.29	5.30	3.52	3.52	3.52	5	4.50
	14:42		Middle	3.0	27.30	27.30	27.20	8.16	8.16	8.16	29.61	29.61	29.61	81.6	81.9	81.5	5.31	5.33	5.30	3.52	3.52	3.52	4	
9/9/19	17:09	Fine	Middle	3.5	27.60	27.60	27.65	8.32	8.32	8.32	31.51	31.51	31.51	85.0	85.8	85.9	6.20	6.28	6.29	3.64	3.64	3.64	5	5.50
	17:11		Middle	3.5	27.70	27.70	27.65	8.32	8.32	8.32	31.51	31.51	31.51	86.1	86.6	85.9	6.31	6.36	6.29	3.64	3.64	3.64	6	
11/9/19	17:30	Fine	Middle	3.5	28.10	28.10	28.15	8.15	8.15	8.15	29.74	29.74	29.74	89.4	90.2	90.4	6.64	6.72	6.74	3.77	3.77	3.77	19	<u>18.50</u>
	17:32		Middle	3.5	28.20	28.20	28.15	8.15	8.15	8.15	29.74	29.74	29.74	90.9	91.2	90.4	6.79	6.82	6.74	3.77	3.77	3.77	18	
13/9/19	4:15	Fine	Middle	2.5	28.60	28.60	28.60	7.73	7.73	7.73	29.90	29.90	29.90	76.4	76.0	75.8	5.02	4.99	4.97	2.13	2.38	2.29	6	6.50
	4:16		Middle	2.5	28.60	28.60	28.60	7.73	7.73	7.73	29.90	29.90	29.90	76.0	74.7	75.8	4.98	4.90	4.97	2.40	2.25	2.29	7	
16/9/19	7:45	Cloudy	Middle	2.5	28.10	28.10	28.10	7.51	7.51	7.51	28.22	28.22	28.22	80.4	82.1	81.7	5.38	5.49	5.46	1.15	1.21	1.17	10	10.00
	7:46		Middle	2.5	28.10	28.10	28.10	7.51	7.51	7.51	28.22	28.22	28.22	82.7	81.4	81.7	5.53	5.45	5.46	1.11	1.19	1.17	10	
18/9/19	8:21	Fine	Middle	2.5	28.10	28.10	28.20	7.69	7.69	7.69	28.37	28.37	28.37	81.8	81.8	82.2	5.88	5.88	5.92	2.76	2.76	2.76	7	7.50
	8:23		Middle	2.5	28.30	28.30	28.20	7.69	7.69	7.69	28.37	28.37	28.37	82.5	82.6	82.2	5.95	5.96	5.92	2.76	2.76	2.76	8	
20/9/19	10:02	Fine	Middle	3.0	25.40	25.40	25.45	8.15	8.15	8.15	28.04	28.04	28.04	84.1	84.3	84.6	6.11	6.13	6.16	3.52	3.52	3.52	10	10.00
	10:04		Middle	3.0	25.50	25.50	25.45	8.15	8.15	8.15	28.04	28.04	28.04	84.7	85.3	84.6	6.17	6.23	6.16	3.52	3.52	3.52	10	
23/9/19	13:46	Fine	Middle	3.0	27.00	27.00	27.10	8.32	8.32	8.32	29.19	29.19	29.19	90.6	90.6	90.9	6.59	6.59	6.62	3.93	3.93	3.93	6	6.00
	13:48		Middle	3.0	27.20	27.20	27.10	8.32	8.32	8.32	29.19	29.19	29.19	90.8	91.4	90.9	6.61	6.67	6.62	3.93	3.93	3.93	6	
25/9/19	15:06	Fine	Middle	3.0	30.10	30.10	30.10	7.25	7.25	7.26	31.32	31.32	31.30	77.7	79.7	79.7	4.94	5.07	5.07	8.52	8.53	8.53	10	10.00
	15:07		Middle	3.0	30.10	30.10	30.10	7.27	7.27	7.26	31.28	31.28	31.30	80.5	81.0	79.7	5.11	5.15	5.07	8.53	8.53	8.53	10	

Remarks:
Single underline denotes exceedance over Action Level.
Double underline denotes exceedance over Limit Level.



**Water Monitoring Result at RW21-P789 - GEC/CRB/SHK
Mid-Flood Tide**

Date	Time	Weather Condition	Sampling Depth m	Water Temperature °C		pH		Salinity ppt		DO Saturation %		DO mg/L		Turbidity NTU		Suspended Solids mg/L								
				Value	Average	Value	Average	Value	Average	Value	Average	Value	Average	Value	Average	Value	Average							
28/8/19	16:10	Fine	Middle	3.5	28.60	28.60	28.70	7.53	7.53	7.55	28.14	28.14	28.14	98.0	98.6	98.2	6.48	6.52	6.49	8.79	8.88	8.83	8	8.00
	16:12		Middle	3.5	28.80	28.80		7.56	7.56		28.13	28.13		98.0	98.0		6.47	6.47		8.81	8.82		8	
30/8/19	19:05	Cloudy	Middle	4.0	27.10	27.10	27.10	7.69	7.69	7.69	29.27	29.27	29.27	91.3	93.0	91.3	6.16	6.28	6.17	5.84	5.90	5.65	10	9.50
	19:06		Middle	4.0	27.10	27.10		7.69	7.69		29.27	29.27		90.1	90.9		6.08	6.14		5.55	5.31		9	
4/9/19	9:54	Fine	Middle	3.5	25.50	25.50	25.55	7.81	7.81	7.82	30.08	30.08	30.08	89.1	89.3	89.7	6.12	6.14	6.18	3.73	3.73	3.73	12	12.50
	9:56		Middle	3.5	25.60	25.60		7.82	7.82		30.08	30.08		89.9	90.4		6.20	6.25		3.73	3.73		13	
7/9/19	14:49	Fine	Middle	4.0	27.50	27.50	27.55	8.09	8.09	8.09	29.75	29.75	29.75	89.4	89.8	90.5	6.14	6.18	6.26	3.85	3.85	3.85	5	5.00
	14:51		Middle	4.0	27.60	27.60		8.09	8.09		29.75	29.75		91.2	91.6		6.33	6.38		3.85	3.85		5	
9/9/19	17:21	Fine	Middle	4.0	27.50	27.50	27.60	8.33	8.33	8.33	31.14	31.14	31.14	87.4	87.8	88.0	6.44	6.48	6.50	3.54	3.54	3.54	8	8.00
	17:23		Middle	4.0	27.70	27.70		8.33	8.33		31.14	31.14		88.2	88.5		6.52	6.55		3.54	3.54		8	
11/9/19	17:46	Fine	Middle	4.0	27.90	27.90	27.95	8.17	8.17	8.17	31.69	31.69	31.69	84.5	85.1	85.3	6.15	6.21	6.23	3.52	3.52	3.52	11	10.50
	17:48		Middle	4.0	28.00	28.00		8.17	8.17		31.69	31.69		85.3	86.2		6.23	6.32		3.52	3.52		10	
13/9/19	5:45	Fine	Middle	3.5	28.60	28.60	28.60	7.79	7.79	7.79	29.58	29.58	29.58	90.2	92.7	91.0	5.93	6.09	5.98	2.53	2.48	2.47	8	7.50
	5:46		Middle	3.5	28.60	28.60		7.79	7.79		29.58	29.58		90.4	90.7		5.94	5.96		2.59	2.27		7	
16/9/19	5:10	Cloudy	Middle	3.5	28.10	28.10	28.10	7.62	7.62	7.62	29.73	29.73	29.73	79.8	81.0	79.8	5.28	5.36	5.28	3.83	3.51	3.54	9	9.50
	5:11		Middle	3.5	28.10	28.10		7.62	7.62		29.73	29.73		79.0	79.4		5.23	5.24		3.43	3.39		10	
18/9/19	8:29	Fine	Middle	4.0	28.20	28.20	28.25	7.64	7.64	7.64	28.14	28.14	28.14	76.9	77.0	77.4	5.52	5.53	5.57	3.59	3.59	3.59	16	15.50
	8:31		Middle	4.0	28.30	28.30		7.64	7.64		28.14	28.14		77.8	77.8		5.61	5.61		3.59	3.59		15	
20/9/19	10:11	Fine	Middle	4.0	25.40	25.40	25.50	7.85	7.85	7.85	29.00	29.00	29.00	78.4	78.7	79.3	5.67	5.70	5.76	4.57	4.57	4.57	14	14.00
	10:13		Middle	4.0	25.60	25.60		7.85	7.85		29.00	29.00		79.6	80.5		5.79	5.88		4.57	4.57		14	
23/9/19	13:55	Fine	Middle	4.0	27.40	27.40	27.45	7.74	7.74	7.74	29.51	29.51	29.51	89.8	90.0	90.4	6.50	6.52	6.56	2.74	2.74	2.74	4	4.00
	13:57		Middle	4.0	27.50	27.50		7.74	7.74		29.51	29.51		90.4	91.3		6.56	6.65		2.74	2.74		4	
25/9/19	15:32	Fine	Middle	4.0	30.70	30.70	30.70	7.64	7.64	7.65	31.65	31.65	31.65	83.9	83.4	83.5	5.27	5.24	5.24	6.63	6.65	6.66	9	9.50
	15:33		Middle	4.0	30.70	30.70		7.65	7.65		31.65	31.65		83.3	83.3		5.21	5.23		6.67	6.67		10	

Remarks:
Single underline denotes exceedance over Action Level.
Double underline denotes exceedance over Limit Level.



**Water Monitoring Result at C7 - Windsor House
Mid-Ebb Tide**

Date	Time	Weather Condition	Sampling Depth		Water Temperature		pH			Salinity		DO Saturation		DO		Turbidity		Suspended Solids						
					°C		-			ppt		%		mg/L		NTU		mg/L						
					Value	Average	Value	Average	Value	Average	Value	Average	Value	Average	Value	Average	Value	Average	Value	Average				
28/8/19	11:35	Fine	Middle	2	28.20	28.20	28.30	7.26	7.26	7.27	27.37	27.37	27.37	67.6	67.7	67.3	4.52	4.52	4.49	2.66	2.76	2.72	5	5.50
	11:37		Middle	2	28.40	28.40		7.27	7.27		27.36	27.36		66.9	66.9		4.46	4.46		2.78	2.69		6	
30/8/19	11:43	Fine	Middle	2	27.80	27.80	27.85	7.52	7.52	7.52	26.58	26.58	26.58	83.6	83.7	84.1	5.61	5.62	5.66	1.59	1.61	1.62	3	3.00
	11:45		Middle	2	27.90	27.90		7.52	7.52		26.58	26.58		84.1	84.8		5.66	5.73		1.63	1.64		3	
4/9/19	16:17	Fine	Middle	2	25.60	25.60	25.60	7.65	7.65	7.65	30.17	30.17	30.17	71.6	71.8	72.1	4.51	4.53	4.56	2.31	2.31	2.31	7	<u>66.00</u>
	16:19		Middle	2	25.60	25.60		7.65	7.65		30.17	30.17		72.3	72.8		4.58	4.63		2.31	2.31		125	
7/9/19	4:05	Fine	Middle	2	27.60	27.60	27.60	7.60	7.60	7.60	29.11	29.11	29.11	76.2	76.6	77.1	5.10	5.13	5.16	1.36	1.30	1.28	5	5.50
	4:06		Middle	2	27.60	27.60		7.60	7.60		29.11	29.11		77.4	78.0		5.18	5.22		1.33	1.11		6	
9/9/19	9:38	Fine	Middle	2	27.20	27.20	27.25	7.98	7.98	7.98	31.13	31.13	31.13	76.5	77.0	77.2	5.48	5.53	5.55	2.22	2.22	2.22	5	5.50
	9:40		Middle	2	27.30	27.30		7.98	7.98		31.13	31.13		77.6	77.6		5.59	5.59		2.22	2.22		6	
11/9/19	11:34	Fine	Middle	2	27.60	27.60	27.70	8.12	8.12	8.12	28.50	28.50	28.50	92.6	93.4	93.6	6.79	6.87	6.89	2.30	2.30	2.30	6	6.00
	11:36		Middle	2	27.80	27.80		8.12	8.12		28.50	28.50		94.1	94.1		6.94	6.94		2.30	2.30		6	
13/9/19	12:21	Fine	Middle	2	28.20	28.20	28.25	7.57	7.57	7.57	30.16	30.16	30.16	79.2	79.8	80.0	5.75	5.81	5.83	3.30	3.30	3.30	5	5.50
	12:23		Middle	2	28.30	28.30		7.57	7.57		30.16	30.16		80.2	80.8		5.85	5.91		3.30	3.30		6	
16/9/19	13:54	Fine	Middle	2	28.60	28.60	28.70	8.24	8.24	8.24	31.30	31.30	31.30	82.2	82.9	83.1	5.92	5.99	6.01	2.54	2.54	2.54	8	8.00
	13:56		Middle	2	28.80	28.80		8.24	8.24		31.30	31.30		83.3	84.1		6.03	6.11		2.54	2.54		8	
18/9/19	14:02	Fine	Middle	2	27.60	27.60	27.70	8.20	8.20	8.20	31.51	31.51	31.51	78.7	79.3	79.3	5.70	5.76	5.76	5.27	5.27	5.27	4	4.00
	14:04		Middle	2	27.80	27.80		8.20	8.20		31.51	31.51		79.6	79.7		5.79	5.80		5.27	5.27		4	
20/9/19	19:36	Fine	Middle	2	25.50	25.50	25.50	7.68	7.68	7.68	30.31	30.31	30.31	90.8	90.6	89.8	6.26	6.25	6.19	1.65	1.54	1.52	4	4.00
	19:37		Middle	2	25.50	25.50		7.68	7.68		30.31	30.31		88.6	89.1		6.11	6.14		1.46	1.41		4	
23/9/19	4:30	Fine	Middle	2	26.20	26.20	26.20	7.73	7.73	7.73	28.47	28.47	28.47	79.3	80.8	80.2	5.47	5.57	5.53	1.93	2.09	2.02	4	4.00
	4:31		Middle	2	26.20	26.20		7.73	7.73		28.47	28.47		80.7	80.0		5.56	5.52		1.97	2.07		4	
25/9/19	11:50	Fine	Middle	2	29.50	29.50	29.50	7.52	7.52	7.52	31.15	31.15	31.15	50.0	50.3	50.0	3.23	3.27	3.22	8.18	8.17	8.17	7	7.50
	11:52		Middle	2	29.50	29.50		7.52	7.52		31.15	31.15		49.7	49.9		3.19	3.20		8.16	8.16		8	

Remarks:
Single underline denotes exceedance over Action Level.
Double underline denotes exceedance over Limit Level.



**Water Monitoring Result at C1 - HKCEC
Mid-Ebb Tide**

Date	Time	Weather Condition	Sampling Depth		Water Temperature			pH			Salinity			DO Saturation			DO			Turbidity			Suspended Solids	
					°C		-		ppt		%		mg/L		NTU		mg/L							
					Value	Average	Value	Average	Value	Average	Value	Average	Value	Average	Value	Average	Value	Average	Value	Average				
28/8/19	10:00	Fine	Middle	2.5	29.10	29.10	29.15	7.79	7.79	7.80	26.41	26.41	26.41	95.3	95.4	95.1	6.32	6.32	6.30	3.24	3.29	3.29	6	6.00
	10:02		Middle	2.5	29.20	29.20		7.80	7.80		26.40	26.40		94.7	94.9		6.27	6.29		3.31	3.31		6	
30/8/19	11:16	Fine	Middle	3.5	27.60	27.60	27.65	8.07	8.07	8.08	27.81	27.81	27.81	89.6	89.4	89.4	6.18	6.16	6.16	3.68	3.68	3.68	16	15.00
	11:18		Middle	3.5	27.70	27.70		8.09	8.09		27.81	27.81		89.3	89.1		6.15	6.13		3.68	3.68		14	
4/9/19	15:55	Fine	Middle	3.0	25.80	25.80	25.85	7.83	7.83	7.84	30.23	30.23	30.23	79.6	79.8	80.2	5.10	5.12	5.17	3.78	3.78	3.78	9	10.00
	15:57		Middle	3.0	25.90	25.90		7.84	7.84		30.23	30.23		80.4	81.1		5.18	5.26		3.78	3.78		11	
7/9/19	7:40	Fine	Middle	3.0	27.70	27.70	27.70	7.71	7.71	7.71	30.58	30.58	30.58	77.5	78.9	78.7	5.14	5.23	5.22	2.64	2.60	2.63	3	3.00
	7:41		Middle	3.0	27.70	27.70		7.71	7.71		30.58	30.58		79.8	78.5		5.29	5.21		2.62	2.67		3	
9/9/19	9:09	Fine	Middle	3.0	27.50	27.50	27.55	8.44	8.44	8.44	30.27	30.27	30.27	81.0	81.4	81.5	5.80	5.84	5.85	2.87	2.87	2.87	4	3.50
	9:11		Middle	3.0	27.60	27.60		8.44	8.44		30.27	30.27		81.6	81.8		5.86	5.88		2.87	2.87		3	
11/9/19	10:46	Fine	Middle	3.0	27.70	27.70	27.80	8.49	8.49	8.49	30.37	30.37	30.37	77.5	77.5	78.1	5.58	5.58	5.64	4.53	4.53	4.53	19	<u>20.50</u>
	10:48		Middle	3.0	27.90	27.90		8.49	8.49		30.37	30.37		78.4	79.0		5.67	5.73		4.53	4.53		22	
13/9/19	11:50	Fine	Middle	3.0	28.60	28.60	28.65	8.09	8.09	8.09	30.76	30.76	30.76	87.2	88.0	88.2	6.42	6.50	6.52	3.60	3.60	3.60	11	11.50
	11:52		Middle	3.0	28.70	28.70		8.09	8.09		30.76	30.76		88.7	88.8		6.57	6.58		3.60	3.60		12	
16/9/19	13:26	Fine	Middle	3.0	28.40	28.40	28.50	7.68	7.68	7.68	31.17	31.17	31.17	91.6	92.1	92.4	6.69	6.74	6.77	3.68	3.68	3.68	8	8.50
	13:28		Middle	3.0	28.60	28.60		7.68	7.68		31.17	31.17		92.9	93.0		6.82	6.83		3.68	3.68		9	
18/9/19	14:36	Fine	Middle	2.5	27.80	27.80	27.85	7.98	7.98	7.98	31.91	31.91	31.91	92.3	92.6	92.7	6.76	6.79	6.80	5.93	5.93	5.93	8	8.50
	14:38		Middle	2.5	27.90	27.90		7.98	7.98		31.91	31.91		92.8	92.9		6.81	6.82		5.93	5.93		9	
20/9/19	22:00	Fine	Middle	3.0	25.70	25.70	25.70	7.78	7.78	7.80	31.26	31.26	31.27	87.6	89.1	89.6	6.00	6.10	6.16	3.47	3.49	3.33	4	4.00
	22:01		Middle	3.0	25.70	25.70		7.82	7.82		31.28	31.28		90.7	90.8		6.26	6.27		3.17	3.20		4	
23/9/19	7:15	Fine	Middle	3.0	27.10	27.10	27.10	7.85	7.85	7.85	32.21	32.21	32.21	86.4	83.6	84.8	5.74	5.57	5.65	4.57	4.52	4.65	5	4.50
	7:16		Middle	3.0	27.10	27.10		7.85	7.85		32.21	32.21		83.6	85.7		5.56	5.71		4.85	4.66		4	
25/9/19	8:00	Fine	Middle	2.5	29.70	29.70	29.70	7.42	7.42	7.45	31.60	31.60	31.60	75.6	75.0	75.3	4.83	4.79	4.81	10.13	10.13	10.13	10	10.00
	8:02		Middle	2.5	29.70	29.70		7.48	7.48		31.60	31.60		74.4	76.3		4.75	4.88		10.13	10.13		10	

Remarks:
Single underline denotes exceedance over Action Level.
Double underline denotes exceedance over Limit Level.



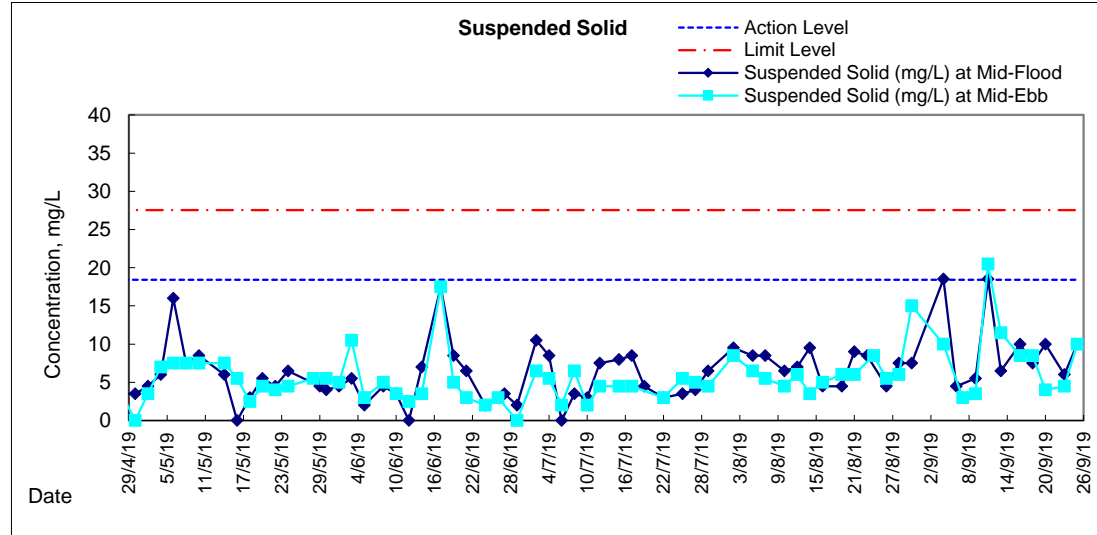
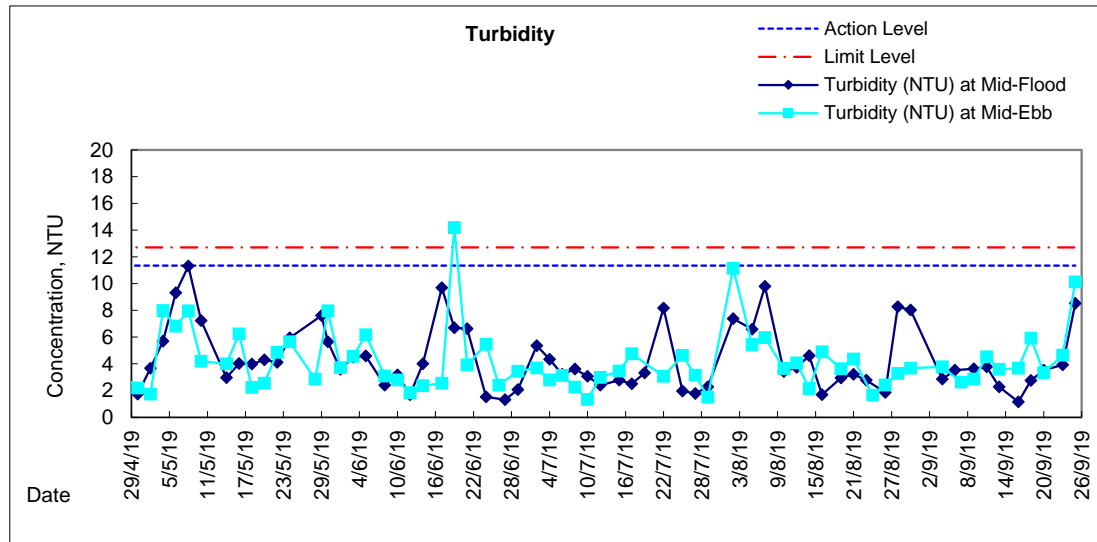
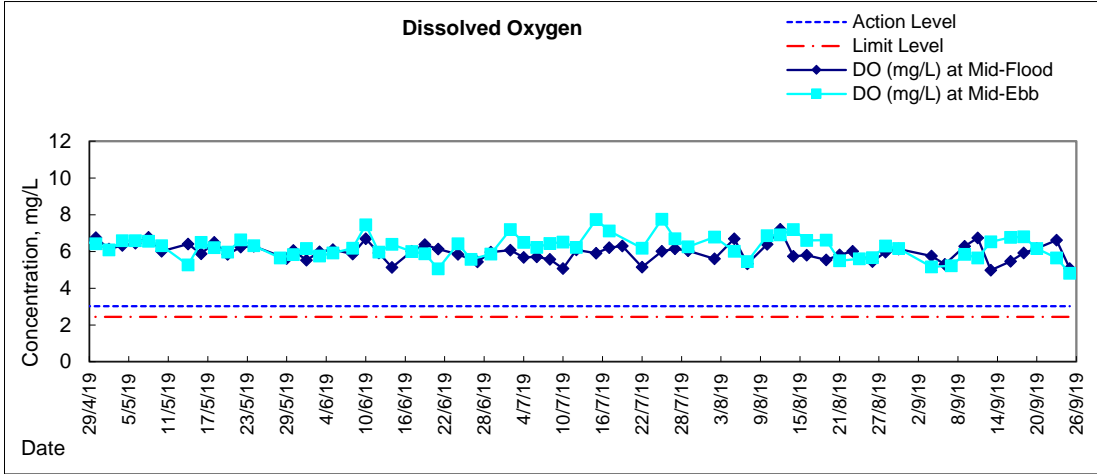
**Water Monitoring Result at RW21-P789 - GEC/CRB/SHK
Mid-Ebb Tide**

Date	Time	Weather Condition	Sampling Depth		Water Temperature			pH			Salinity		DO Saturation		DO		Turbidity		Suspended Solids					
					°C		-		ppt		%		mg/L		NTU		mg/L							
					Value	Average	Value	Average	Value	Average	Value	Average	Value	Average	Value	Average	Value	Average	Value	Average				
28/8/19	11:23	Fine	Middle	3.5	28.40	28.40	28.45	7.14	7.14	7.17	27.67	27.67	27.67	89.5	88.3	88.5	5.96	5.88	5.88	4.93	4.96	4.95	5	4.50
	11:25		Middle	3.5	28.50	28.50		7.20	7.20		27.67	27.67		88.5	87.5		5.86	5.82		4.97	4.95		4	
30/8/19	11:26	Fine	Middle	4.0	27.30	27.30	27.40	7.81	7.81	7.81	28.52	28.52	28.52	92.9	92.9	93.2	6.45	6.45	6.48	3.24	3.24	3.26	11	11.50
	11:28		Middle	4.0	27.50	27.50		7.81	7.81		28.52	28.52		93.4	93.7		6.49	6.52		3.27	3.27		12	
4/9/19	16:03	Fine	Middle	4.0	25.70	25.70	25.80	7.52	7.52	7.52	29.89	29.89	29.89	75.8	75.9	76.2	4.82	4.83	4.86	4.04	4.04	4.04	11	10.50
	16:05		Middle	4.0	25.90	25.90		7.52	7.52		29.89	29.89		76.3	76.6		4.88	4.91		4.04	4.04		10	
7/9/19	5:00	Fine	Middle	4.0	27.60	27.60	27.60	7.73	7.73	7.73	29.80	29.00	29.60	74.5	74.6	74.5	4.98	4.98	4.97	2.64	2.44	2.36	3	2.50
	5:01		Middle	4.0	27.60	27.60		7.73	7.73		29.80	29.80		74.3	74.4		4.95	4.96		2.26	2.10		2	
9/9/19	9:23	Fine	Middle	3.5	26.90	26.90	27.00	8.20	8.20	8.20	28.18	28.18	28.18	81.6	82.1	82.3	5.86	5.91	5.93	4.93	4.93	4.93	9	9.50
	9:25		Middle	3.5	27.10	27.10		8.20	8.20		28.18	28.18		82.3	83.0		5.93	6.00		4.93	4.93		10	
11/9/19	10:54	Fine	Middle	3.5	28.10	28.10	28.15	8.10	8.10	8.10	31.74	31.74	31.74	90.5	91.0	91.1	6.58	6.63	6.64	4.89	4.89	4.89	10	10.50
	10:56		Middle	3.5	28.20	28.20		8.10	8.10		31.74	31.74		91.1	91.9		6.64	6.72		4.89	4.89		11	
13/9/19	11:59	Fine	Middle	3.5	28.40	28.40	28.50	7.72	7.72	7.72	28.53	28.53	28.53	83.0	83.3	83.6	6.00	6.03	6.06	2.91	2.91	2.91	8	8.50
	12:01		Middle	3.5	28.60	28.60		7.72	7.72		28.53	28.53		83.8	84.3		6.08	6.13		2.91	2.91		9	
16/9/19	13:38	Fine	Middle	4.0	28.50	28.50	28.55	7.58	7.58	7.58	29.18	29.18	29.18	82.6	83.0	83.4	5.96	6.00	6.04	2.95	2.95	2.95	9	9.50
	13:40		Middle	4.0	28.60	28.60		7.58	7.58		29.18	29.18		83.5	84.4		6.05	6.14		2.95	2.95		10	
18/9/19	14:46	Fine	Middle	4.0	27.90	27.90	28.00	7.57	7.57	7.57	29.81	29.81	29.81	91.4	92.2	92.4	6.67	6.75	6.77	3.56	3.56	3.56	15	16.00
	14:48		Middle	4.0	28.10	28.10		7.57	7.57		29.81	29.81		92.6	93.2		6.79	6.85		3.56	3.56		17	
20/9/19	19:15	Fine	Middle	4.0	25.40	25.40	25.40	7.83	7.83	7.83	31.55	31.55	31.55	90.6	89.9	89.7	6.22	6.17	6.16	3.83	3.63	3.60	12	11.00
	19:16		Middle	4.0	25.40	25.40		7.83	7.83		31.55	31.55		88.1	90.3		6.05	6.19		3.70	3.25		10	
23/9/19	5:07	Fine	Middle	4.0	26.30	26.30	26.30	7.74	7.74	7.74	28.40	28.40	28.40	80.9	80.0	79.5	5.57	5.50	5.48	3.65	3.49	3.56	3	3.00
	5:08		Middle	4.0	26.30	26.30		7.74	7.74		28.40	28.40		79.0	78.2		5.44	5.39		3.57	3.51		3	
25/9/19	9:00	Fine	Middle	3.5	29.70	29.70	29.70	7.56	7.56	7.57	31.27	31.27	31.28	80.4	80.3	80.2	5.14	5.14	5.12	6.19	6.16	6.17	10	9.50
	9:02		Middle	3.5	29.70	29.70		7.58	7.58		31.28	31.28		80.0	80.0		5.10	5.10		6.17	6.16		9	

Remarks:
Single underline denotes exceedance over Action Level.
Double underline denotes exceedance over Limit Level.

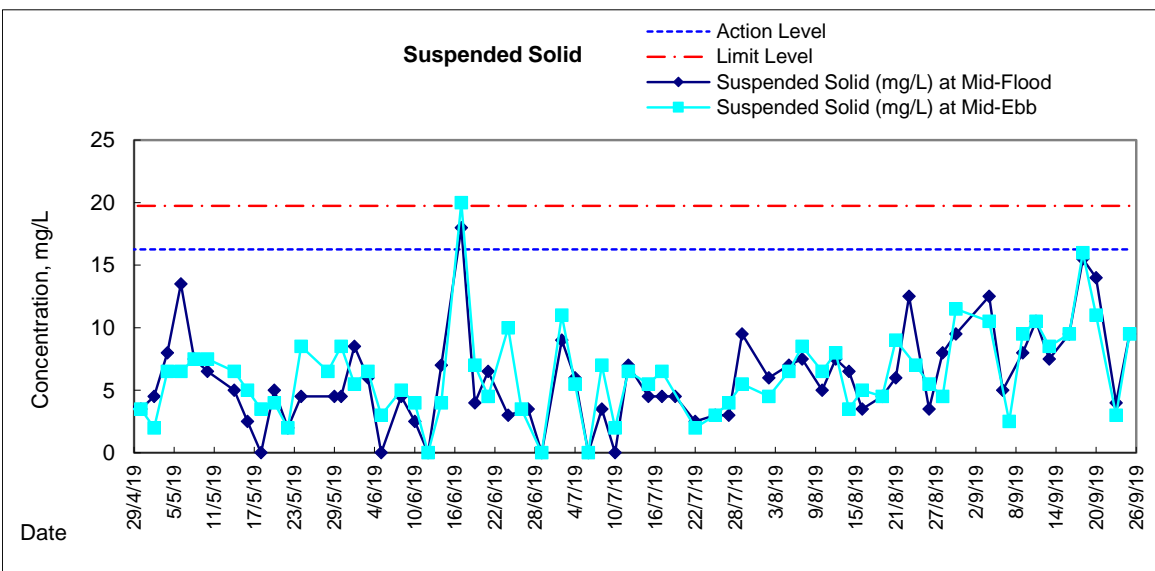
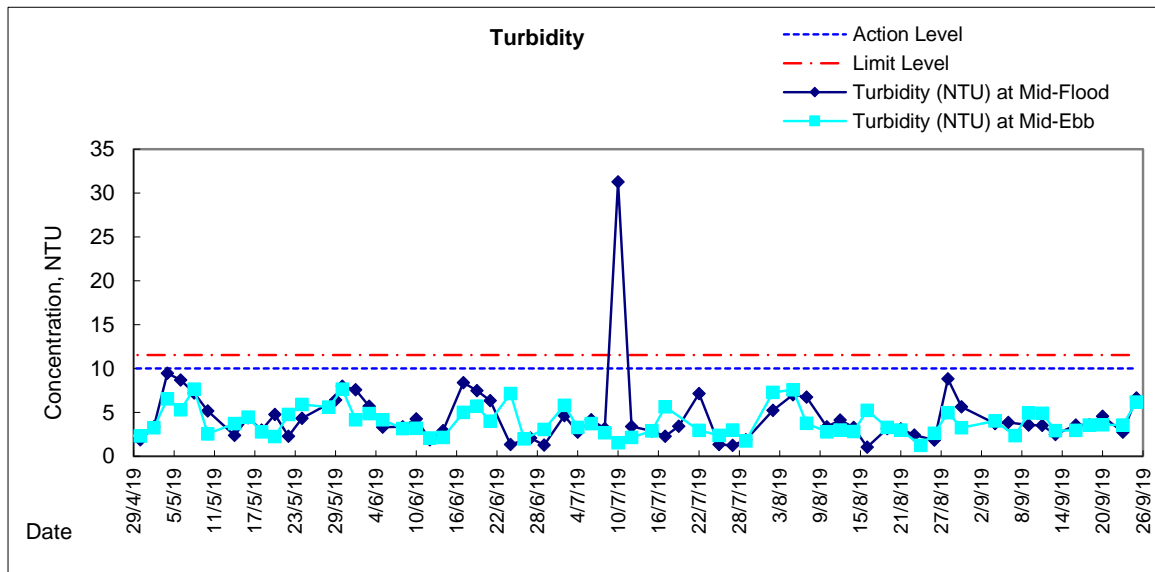
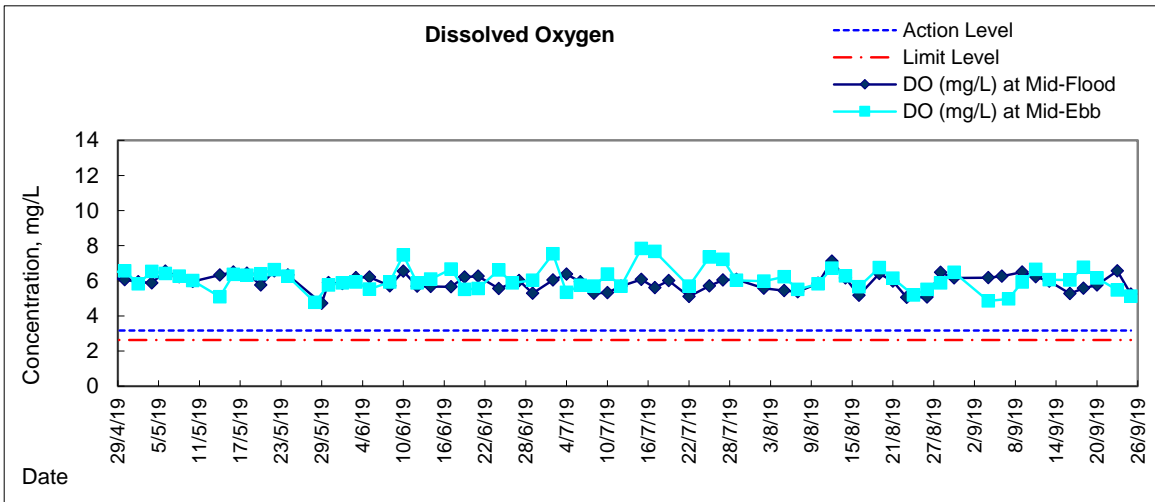


Graphic Presentation of Water Quality Result of C1 - HKCEC





Graphic Presentation of Water Quality Result of RW21-P789 - GEC/CRC/SHK





Graphic Presentation of Water Quality Result of C7 - Windsor House

